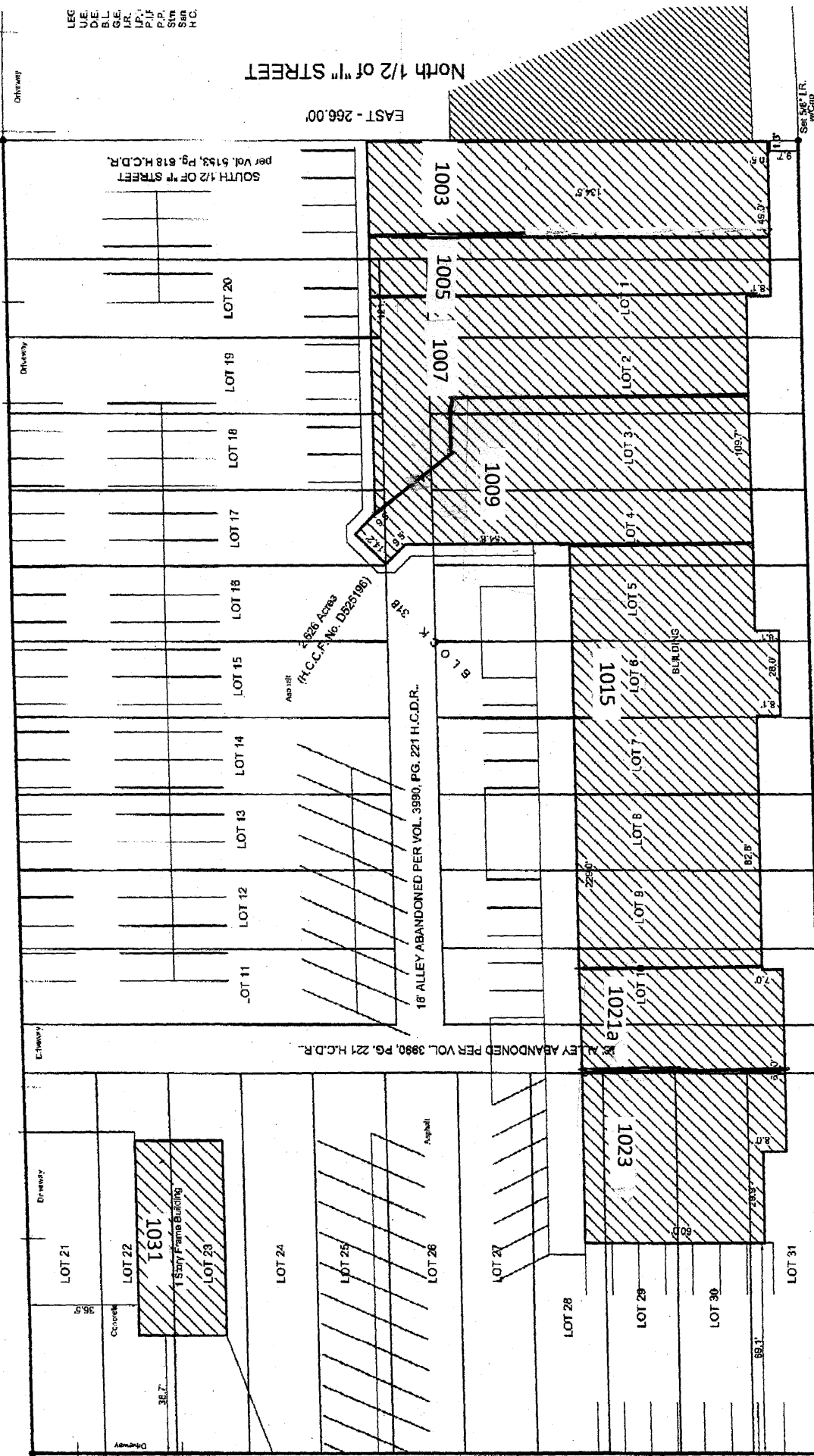


**SOUTH BROADWAY / OLD HIGHWAY 146**  
(100' R.O.W.)

NORTH - 430.00'

Set 26' R.  
w/ Cap



Fr. 1.  
1" IR.  
in Conc.  
(Bear'g Control)

WEST - 266.00'

(100' R.O.W.)

Set 26' R.  
w/ Cap

SOUTH - 430.00'

**TEXAS STREET**  
(60' R.O.W.)

LEG  
UE  
DE  
BL  
G.E.  
I.R.  
I.P.  
P.P.  
C.M.  
S.M.  
H.C.

North 1/2 of " STREET

EAST - 266.00'

SOUTH 1/2 OF " STREET  
per Vol. 5193, Pg. 618 H.C.D.R.

Set 26' R.  
w/ Cap